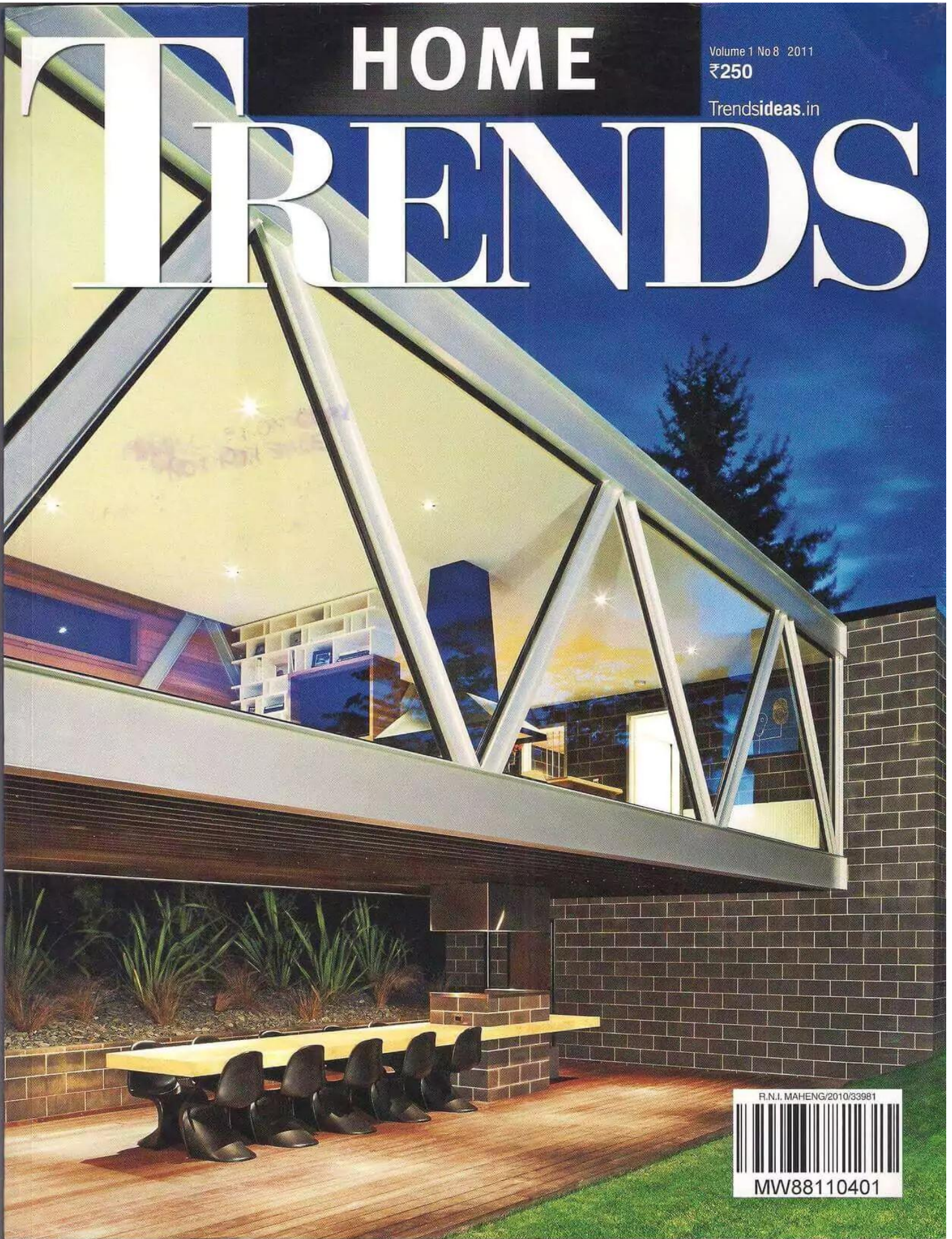


HOME TRENDS

Volume 1 No 8 2011

₹250

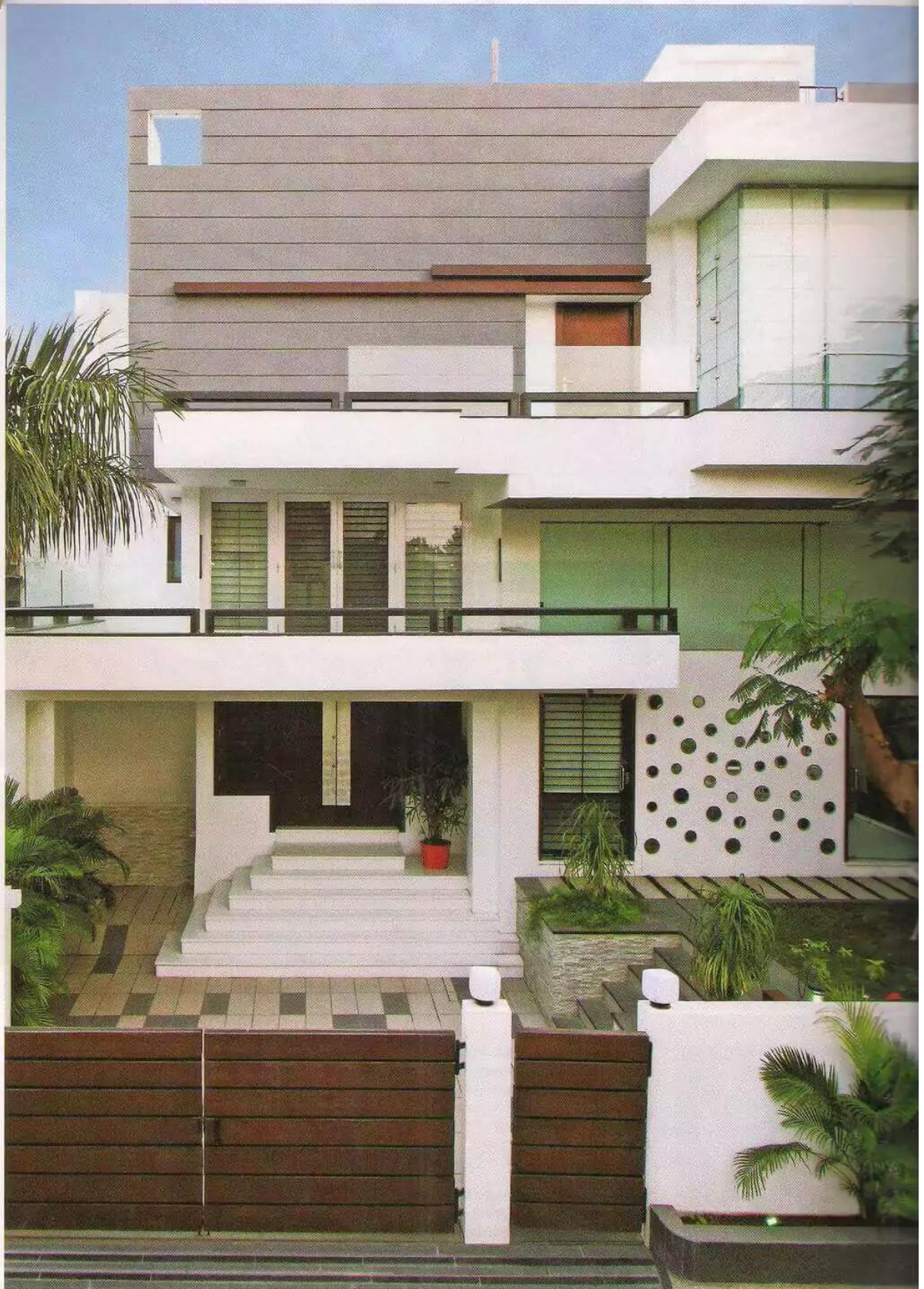
Trendsideas.in



R.N.I. MAHENG/2010/33981



MW88110401





Striking a balance

Multiple levels add volume and lend continuity to this house while an indoor water body lends serenity

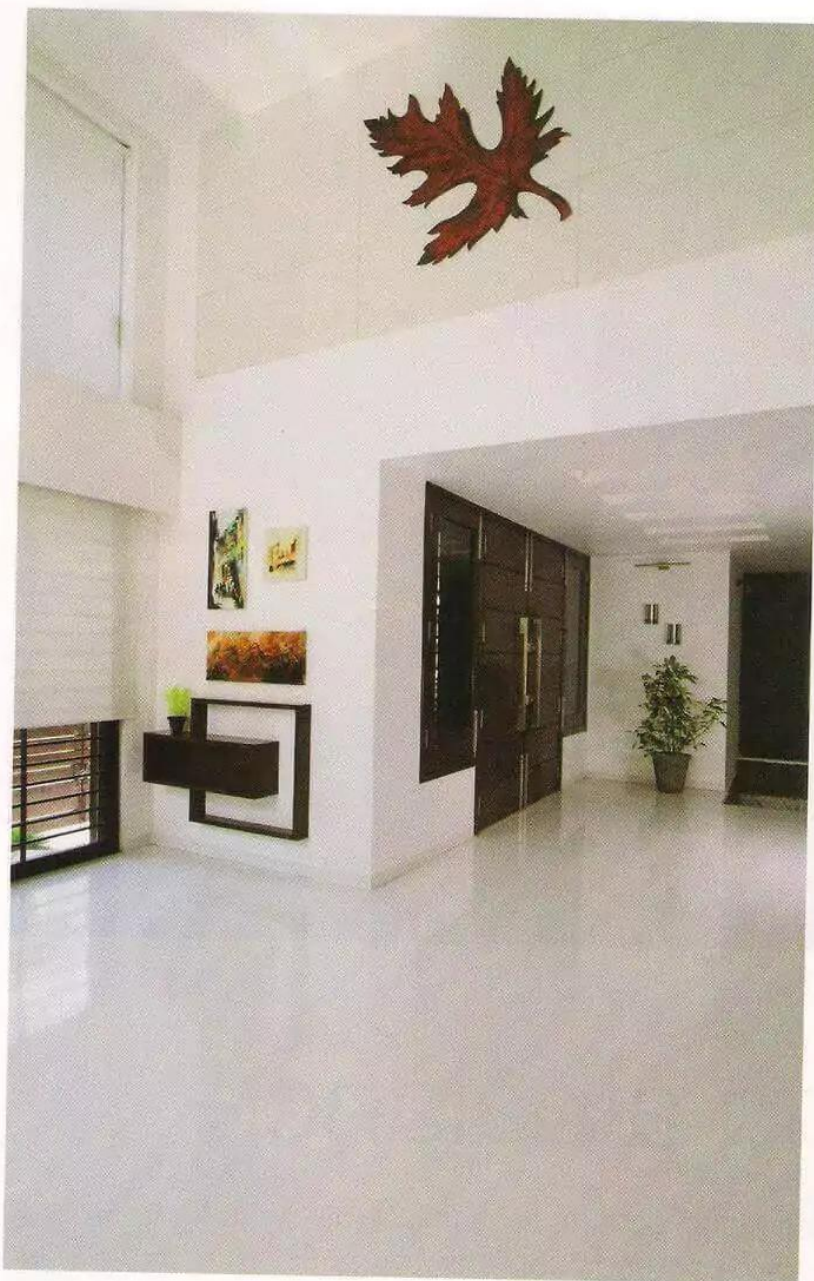
g a home, not a house, is one of the important aspects of a project that architects must keep in mind. The design is only as good as its connection with those occupying that

ing this in mind, Prajacta Kadu, principal architect of New Delhi-based practice Archi-act has ensured that a sense of quietude pervades in Sushil Satwani's Indore house. The architect has used a water feature, white spaces and varying volumes so the family is connected to every part of the house.

A gulmohur tree (*Delonix regia*) is the focal



*Facing page, above and left: Sticking to the owners' brief, architect Prajacta Kadu has kept the façade of this house white. A collage of mirrors appears on the front wall to guide positive energy inside. Garden furniture is shaded by the gulmohur tree (*Delonix regia*) to provide respite from the heat.*



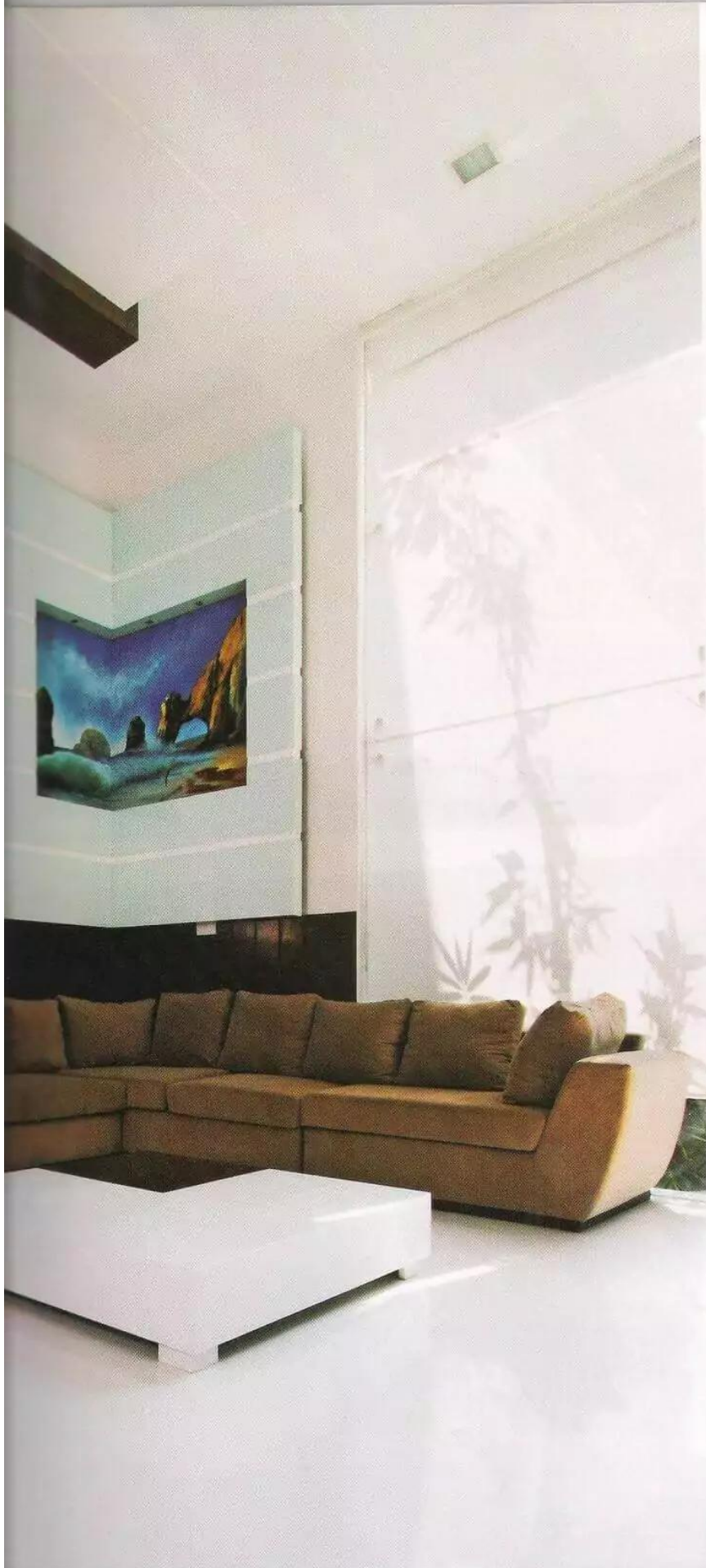
Above and right: The entrance leads to a double-height volume that serves as the informal seating area. A red, maple leaf has been painted on the wall to break the monotony of the white space. A partition separates the informal seating from the formal living at the split-level.

point in the elevated lawn at the entrance. A whitewash dominates the exterior walls of the house with glass doors and mirrors punctuating the front wall.

"Instead of using one, full-length mirror, I have created a collage of mirrors to stylise the front wall and more importantly to channelise positive energy into the house," says Kadu. "An elevated plinth has also been created for the same purpose and doubles up as a basement."

While the multiple levels of the house are clearly demarcated from the outside, the interior varies between double-heights and split-





Above: A Buddha statue has been placed at the centre of the shallow pool. The sound of water makes the seating area a soothing space.



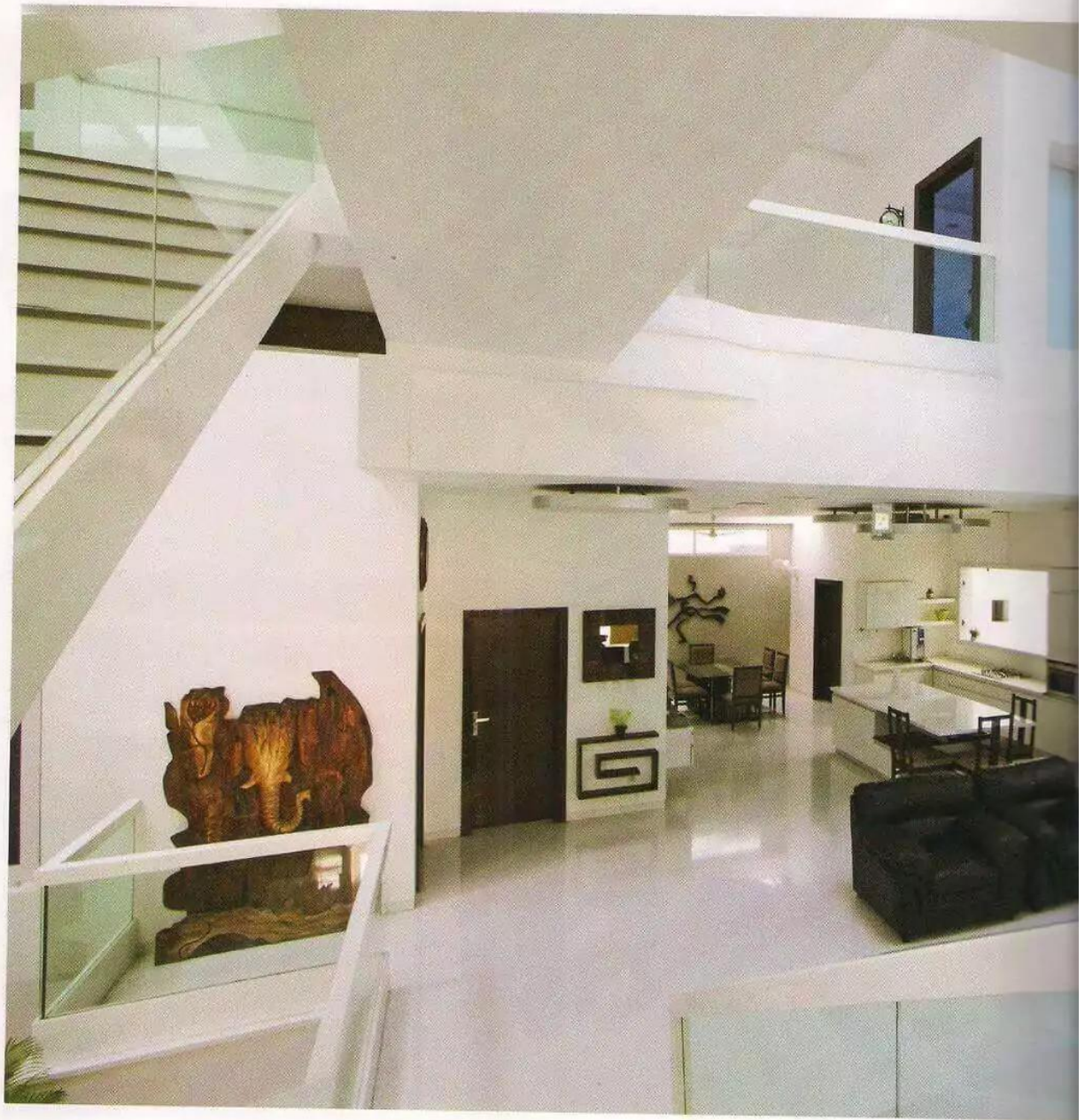


the doorway opens to a shallow pool, at the top of which sits a white marble Buddha statue. The wall here has niches that allow water to flow down its surface and collect in the pool. The sound of the water lapping against the pebbles resonates throughout the house, creating a calm atmosphere. Part of the wall that surrounds the pool has a mural of a peepul tree (Ficus religiosa), recreating the scene of the Buddha's enlightenment. "The pool forms the heart of the house," says the architect. "This area is visible from all levels."



Facing page: The split-level landing serves as an observatory for the scene of the enlightenment. A peepul tree has been shaped in plaster of Paris to provide a backdrop for the Buddha statue.

Above and left: The formal living area, defined by black sofas, leads to the temple nook on the split-level.



Above: The lower level is characterised by the absence of regular walls. All the areas of the split-level such as the formal living, dining, kitchen and a bedroom, are visible without any obstructions.

The ground floor doesn't have any walls that obstruct the view of the entire floor. While the informal seating is on the same level as the pool, the formal living, dining and the kitchen are on a split-level. Kadu has designed each space with different colours and textures, but by using acrylic partitions between the areas, she has connected the spaces without negating privacy.

A large sofa dominates the informal seating area even as the floor-to-ceiling glass walls ensure the room looks out to the front lawn. The steps to the split-level lead to the formal living, kitchen and dining areas. A skylight beyond the

formal living space brings natural light to a temple nook at the end of the room. The living and the dining form a continuous zone at the rear. The open kitchen's island is extended to serve the purpose of a breakfast table.

The first floor landing, used as a lounge space, features a brick-clad wall to contrast the white tone of the mural and the white space on the ground level. The house's four bedrooms are spread over the first and the second level.

"The owner wanted one bedroom on the ground floor with easy access to the kitchen and dining area. The other bedrooms are located on the

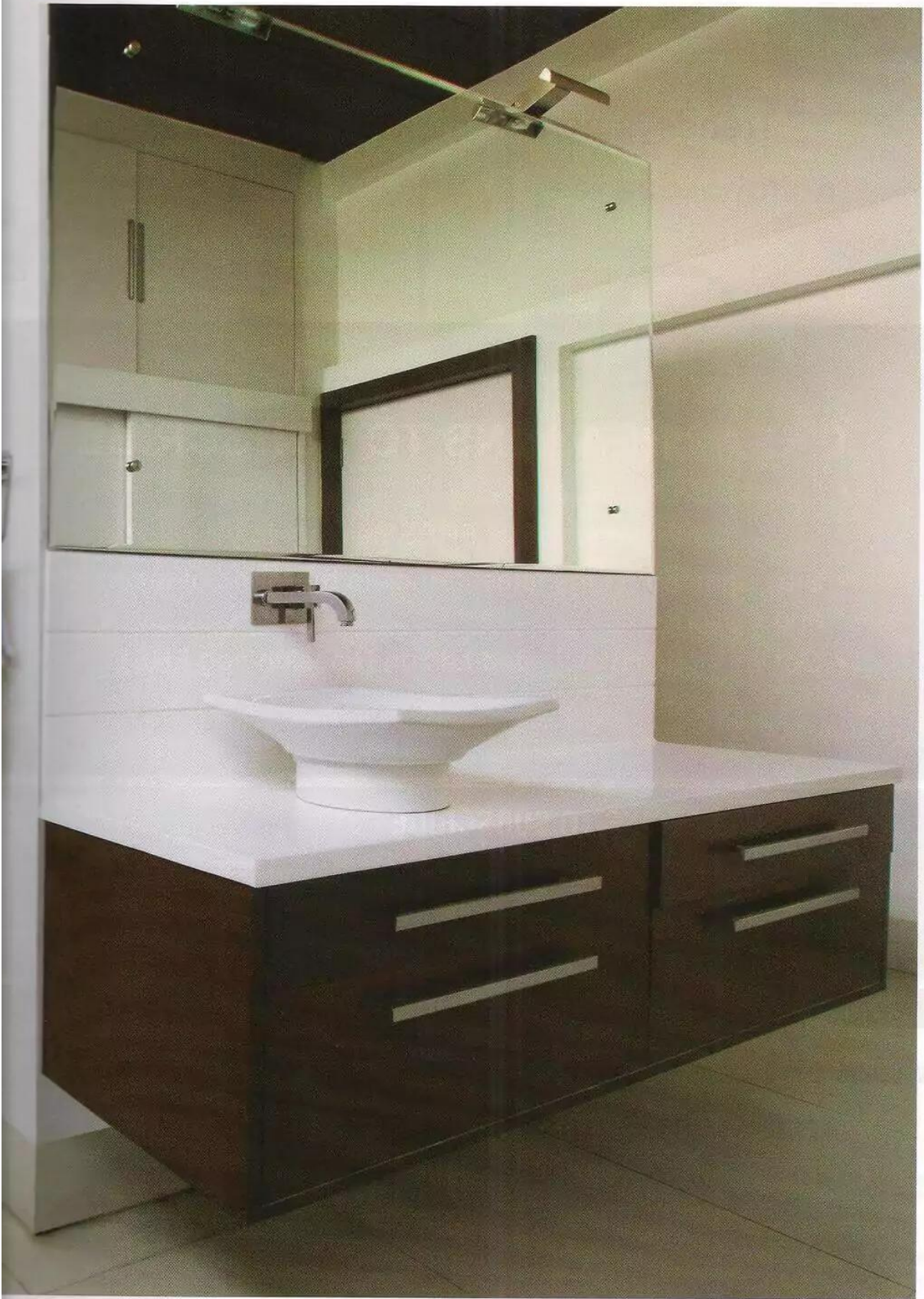


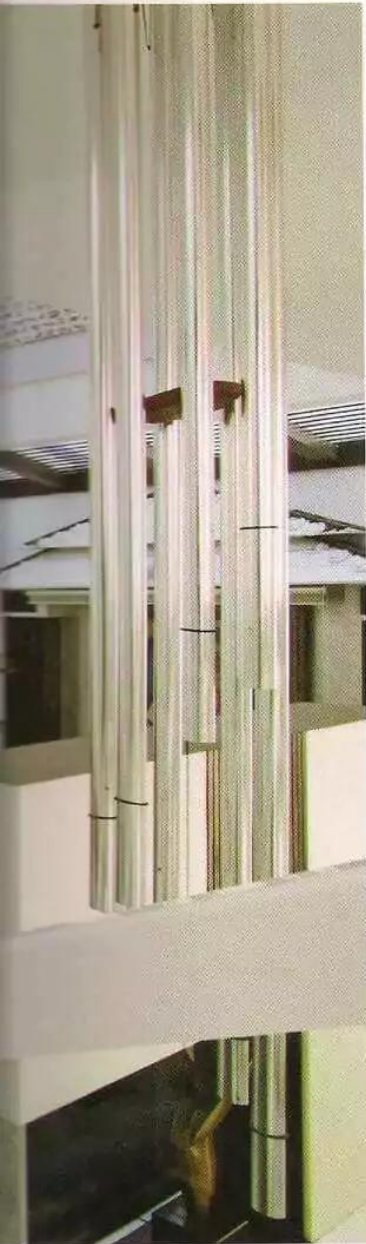
Architect/designer: Prajacta Kadu,
Arch Avenue
Paints: Dulux
Furniture: White Lotus
Kitchen: Aran Kitchens
Basin: Duravit
Shower: Grohe
Toilet: Duravit
Lighting: Philips Eco range

Story by Zalak Modi
Photography by Indrajit Sathe

 [View more images at
Trendsideas.com/go/31473](https://www.trendsideas.com/go/31473)

Right: The master bathroom is a clean area with facilities hidden out of view from the entrance. The shower stall is behind the washbasin and the dresser.





says the architect.
 theme in the children's bedroom plays
 a life-size painting of a cartoon charac-
 ter half a wall. A low, wall-to-wall bed
 in the room has free space.
 In the master bedroom, a silver textured
 wall has a full-length mirror. Wooden floor-
 ing is the seating area in this room. French
 doors open the room to the lawn's gulmohur
 tree. The master bathroom disguises the shower
 area and the basin and the dresser. The neu-
 tral tone is shattered by a burst of colours
 over stall's tiles.



Top and above: The open kitchen
 is a clean space. Its island has an
 extended counter that works as a
 breakfast table. The dining area is
 flush with natural light from the
 high windows at the rear. The ceiling
 features circular detailing distinct
 from the rest of the house.

Left: Different materials distinguish
 the sleeping area from the seating
 area in the master bedroom.